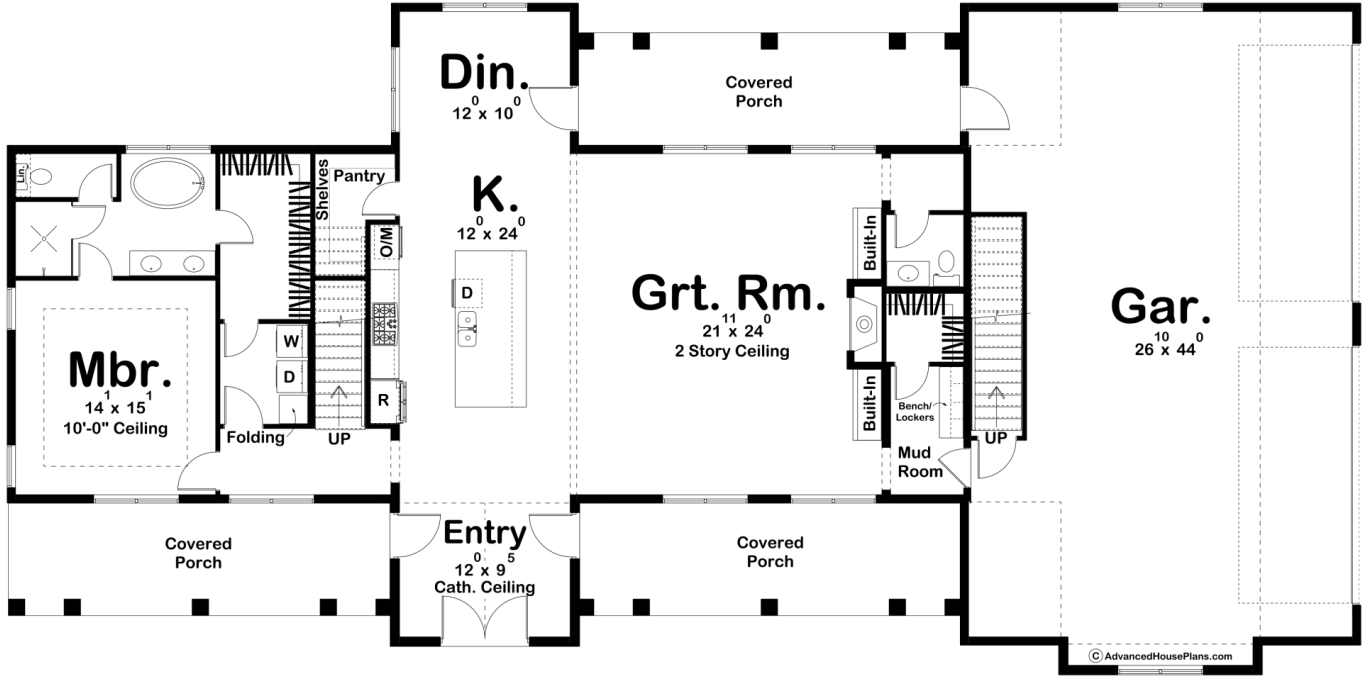
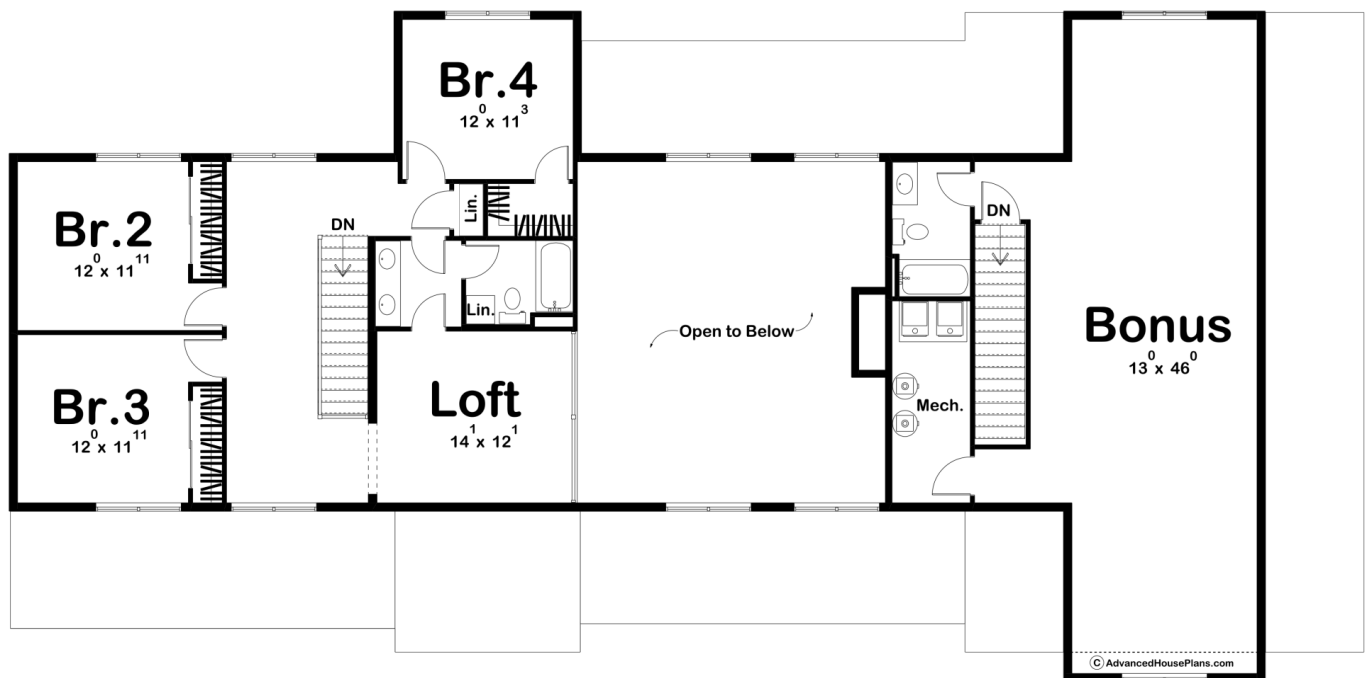




30232 - Battle Creek Data Sheet

3064 SQ FT	4 BEDS	4 BATHS	4 BAYS	95' 0" WIDE	47' 0" DEEP
---------------	-----------	------------	-----------	----------------	----------------





## Construction Specs

### Layout

Bedrooms	4
Bathrooms	4
Garage Bays	4

### Square Footage

Main Level	1952 Sq. Ft.
Second Level	1112 Sq. Ft.
Covered Area	648 Sq. Ft.
Garage	1271 Sq. Ft.
Total Finished Area	3064 Sq. Ft.

### Exterior Dimensions

Width	95' 0"
Depth	47' 0"
Ridge Height	28' 10"
<i>Calculated from main floor line</i>	

**Default Construction Stats**  
*Stats are unique to the individual plan.*

Foundation Type	Slab
Exterior Wall Construction	2x6
Roof Pitches	Primary 8/12, Secondary 12/12, 4/12
Main Wall Height	10'
Second Wall Height	8'

**Plan Description**

The Battle Creek is a barndominium style house plan with 4 bedrooms and 4 bathrooms. Battle Creek is a unique and spacious home design that combines the rustic charm of a barn with the modern conveniences of a traditional house. The exterior of the home features board and batten siding, with a large covered porch that splits to either side of the entry. The porch provides a great place to relax and enjoy the outdoors. Inside, the house is open and airy, with high ceilings and plenty of windows to let in natural light. The main living area is open concept, with the kitchen, dining, and living room all connected. The kitchen features plenty of counter space and storage, as well as modern appliances and fixtures. The dining area is adjacent to the kitchen, and provides plenty of space for a large table and chairs. The living room is a comfortable and relaxing space, with a fireplace and plenty of seating. The fireplace is flanked by built-in bookshelves. The house has 4 amazing bedrooms. The master bedroom is located on the main floor, and features a spacious en-suite bathroom with a spa tub, separate shower, and double vanity. The other 3 bedrooms are located on the upper level, and share a large bathroom with double vanity and separate tub/shower. The 4 car garage is a practical and convenient feature of this house plan, providing ample space for vehicles and storage. Above the garage, there is a bonus room that can be used as a game room, home gym, or additional living space. The optional bonus space above the garage adds 829 sq ft. Overall, this barndominium style house plan is a spacious and stylish home that is perfect for families or those who love to entertain. It offers all the amenities and conveniences of a modern home, while also incorporating the charm and character of a traditional barn.