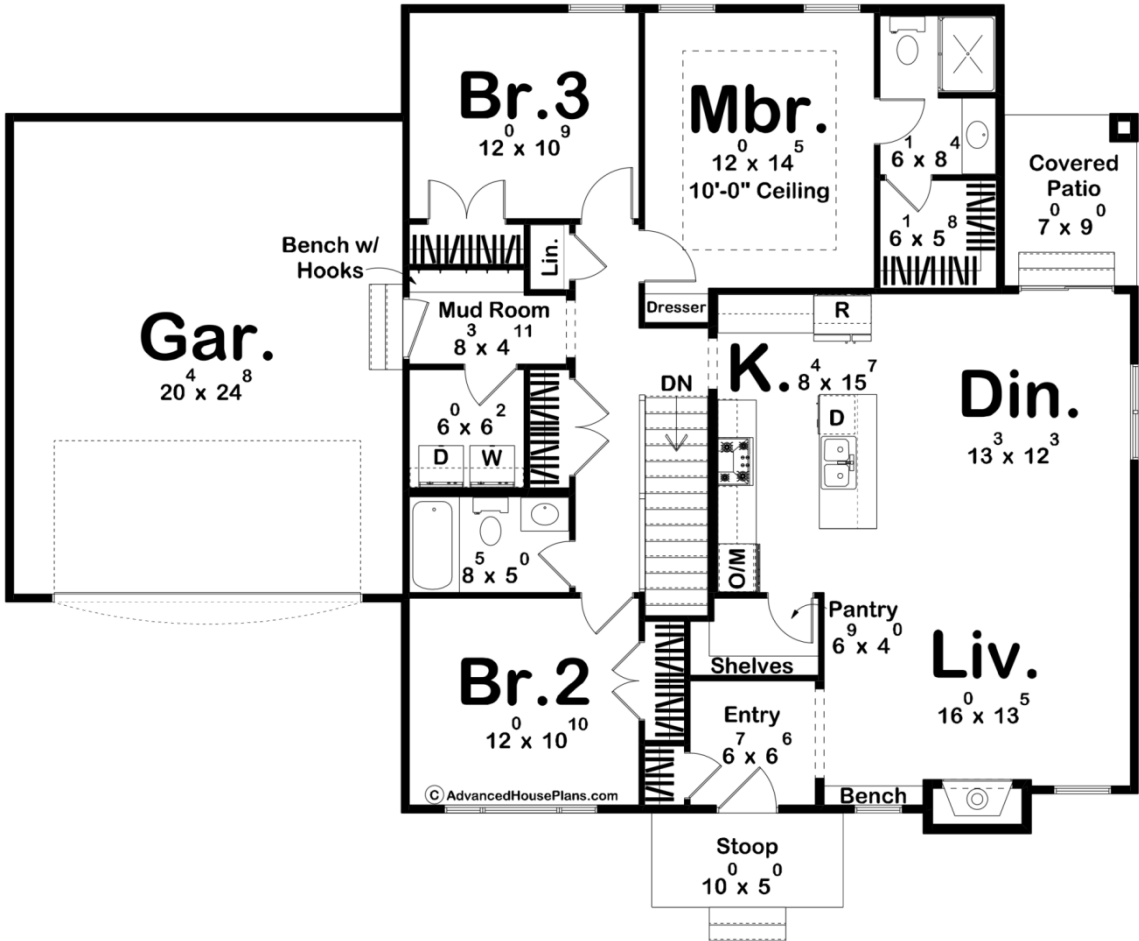




30522 - Bauman Data Sheet

1496 SQ FT	3 BEDS	2 BATHS	2 BAYS	59' 0" WIDE	47' 0" DEEP
---------------	-----------	------------	-----------	----------------	----------------



Construction Specs

Layout

Bedrooms

Bathrooms	2
Garage Bays	2
Square Footage	
Main Level	1496 Sq. Ft.
Covered Area	61 Sq. Ft.
Garage	524 Sq. Ft.
Total Finished Area	1496 Sq. Ft.
Exterior Dimensions	
Width	59' 0"
Depth	47' 0"
Ridge Height <i>Calculated from main floor line</i>	23' 2"
Default Construction Stats <i>Stats are unique to the individual plan.</i>	
Foundation Type	Basement
Exterior Wall Construction	2x4
Roof Pitches	Primary 10/12 Secondary 16/12
Foundation Wall Height	9'
Main Wall Height	9'

Plan Description

Welcome to our newest plan, Bauman, a quaint cottage-style house that exudes charm and functionality. The exterior features a welcoming front stoop, a spacious two-car garage, and a tall stone chimney that adds a cozy aesthetic to the stucco facade. Inside, the house includes a dedicated entry that opens up to an inviting open-concept living, dining, and kitchen area, perfect for both daily living and entertaining. With three bedrooms and two bathrooms, the Bauman plan provides ample space for family members or guests, offering a comfortable and stylish home for all.