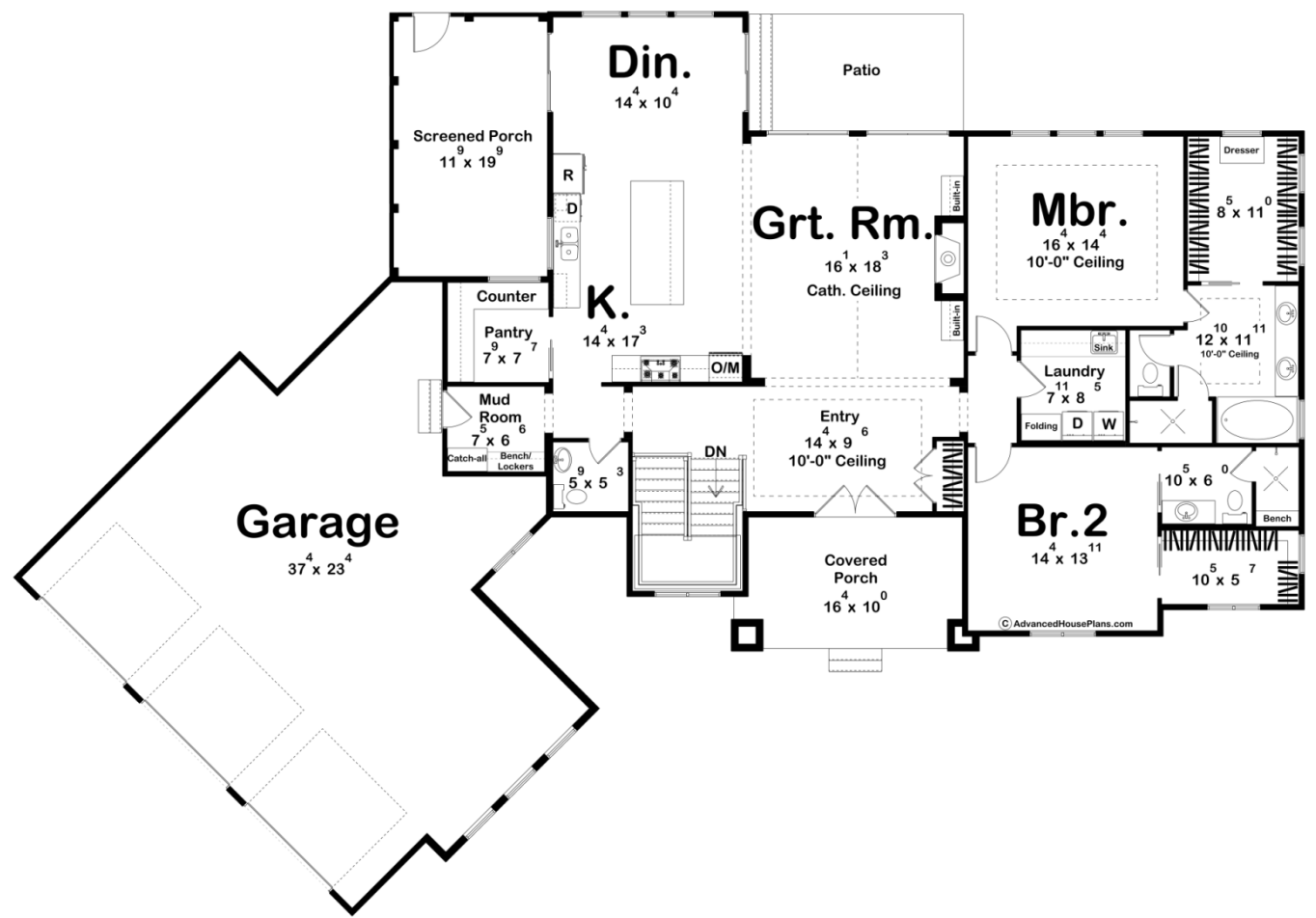




29409 - Bridgetown Data Sheet

2172 SQ FT	2 BEDS	3 BATHS	3 BAYS	98' 0" WIDE	69' 0" DEEP
---------------	-----------	------------	-----------	----------------	----------------



Construction Specs

Layout
--------

Bedrooms

Bathrooms	3
Garage Bays	3
<b>Square Footage</b>	
Main Level	2172 Sq. Ft.
Garage	1095 Sq. Ft.
Total Finished Area	2172 Sq. Ft.
<b>Exterior Dimensions</b>	
Width	98' 0"
Depth	69' 0"
Ridge Height	22' 0"
<i>Calculated from main floor line</i>	
<b>Default Construction Stats</b>	
<i>Stats are unique to the individual plan.</i>	
Foundation Type	Basement
Exterior Wall Construction	2x4
Roof Pitches	8/12 Primary 10/12, Secondary
Foundation Wall Height	9'
Main Wall Height	9'

## Plan Description

Discover the perfect blend of classic Craftsman charm and modern convenience in this stunning 1-story home. Step inside through the elegant double doors, and you'll be welcomed by a spacious entry hall with soaring 10-foot ceilings, setting the tone for the rest of the home. The heart of this home is the great room, where a cathedral ceiling and a cozy fireplace surrounded by custom built-ins create an atmosphere of warmth and sophistication. The open floor plan seamlessly connects the great room with the kitchen and dining area, making it ideal for entertaining. Imagine cooking in a kitchen equipped with a large island and a generous walk-in pantry, while guests mingle in the dining area that opens to both a rear patio and a screened porch—perfect for year-round enjoyment. On the opposite side of the home, retreat to your master suite, a true sanctuary with a luxurious bath featuring dual sinks, a soaking tub, a walk-in shower, and a spacious walk-in closet. This Craftsman home offers not just a place to live, but a lifestyle that blends timeless design with thoughtful functionality. Make it yours and enjoy a home that's as beautiful as it is practical.