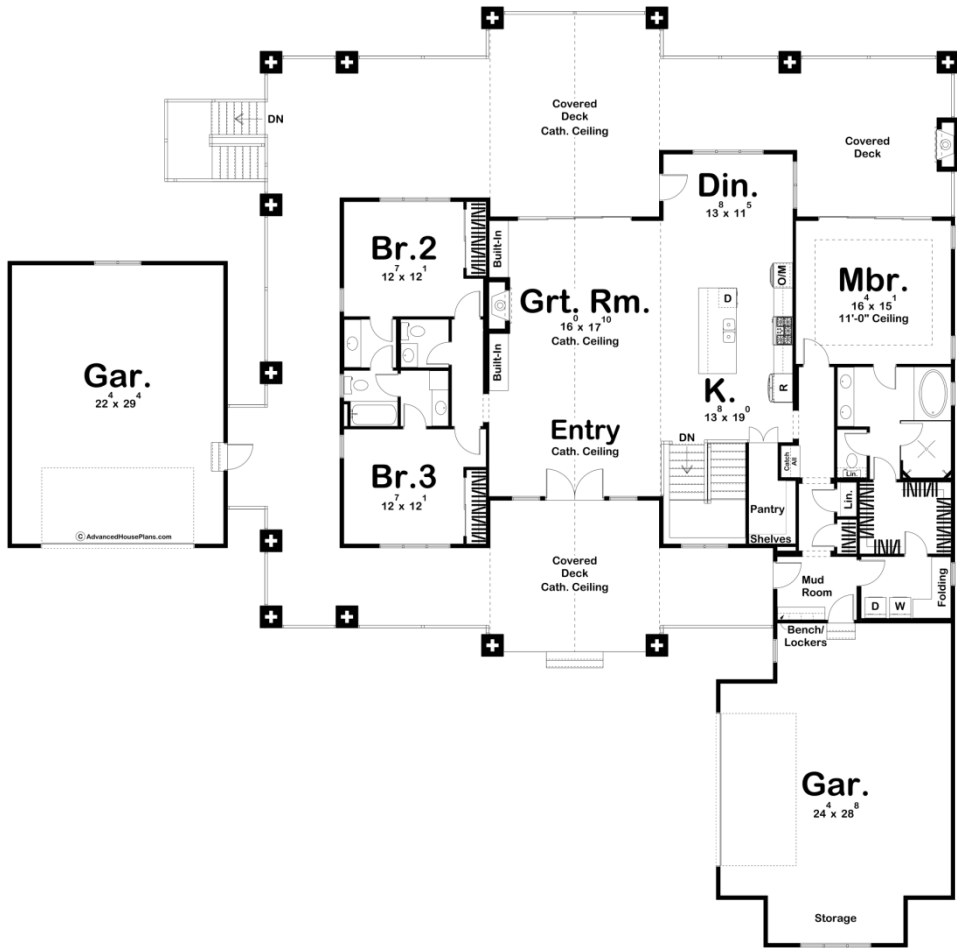
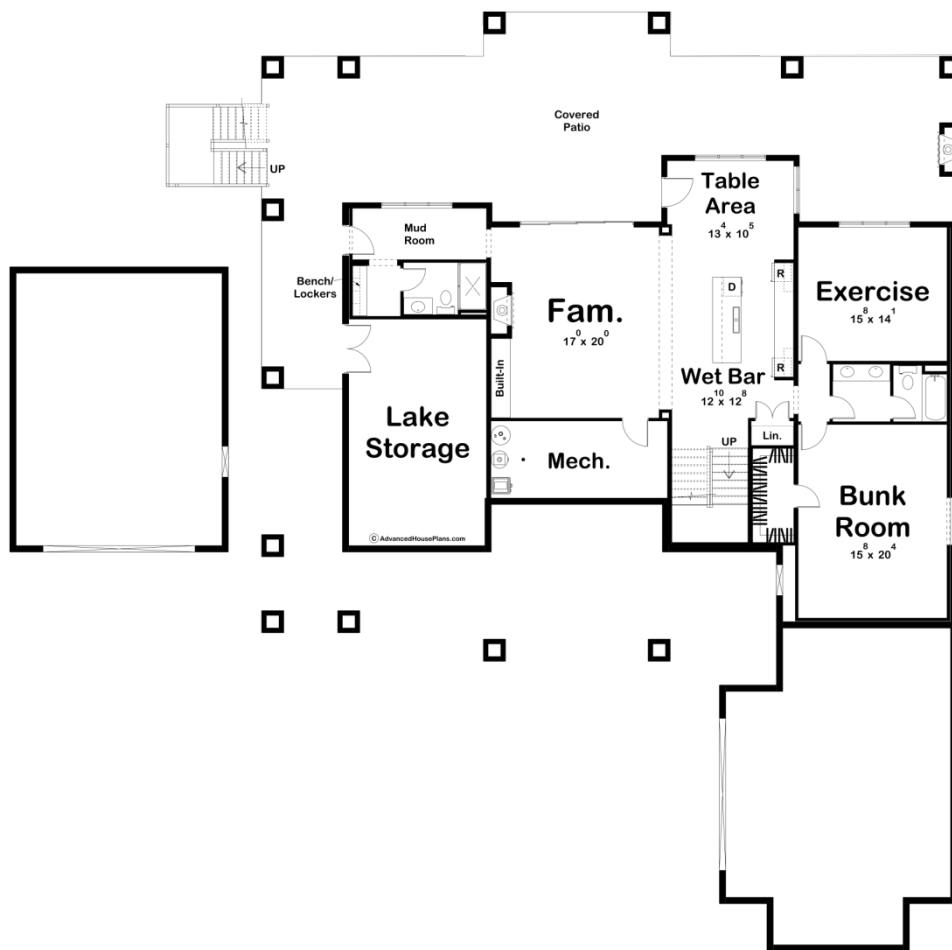




30090 - Copper Mill Data Sheet

2435 SQ FT	3 BEDS	3 BATHS	4 BAYS	100' 0" WIDE	98' 8" DEEP
---------------	-----------	------------	-----------	-----------------	----------------





Construction Specs

Layout

Bedrooms	3
Bathrooms	3
Garage Bays	4

Square Footage

Main Level	2435 Sq. Ft.
Covered Area	2045 Sq. Ft.
Garage	1454 Sq. Ft.
Total Finished Area	2435 Sq. Ft.

Exterior Dimensions

Width	100' 0"
Depth	98' 8"
Ridge Height	28' 1"
<i>Calculated from main floor line</i>	

Default Construction Stats
Stats are unique to the individual plan.

Foundation Type	Walkout
Exterior Wall Construction	2x4
Roof Pitches	8/12 Primary, 12/12 6/12 Secondary
Foundation Wall Height	9'
Main Wall Height	10'

Plan Description

If you are looking for a modern farmhouse style lake home with plenty of outdoor space, look no further than the Copper Mill plan. The exterior of the house has a unique curb appeal with its combination of shake siding, wood beams, and large windows. The split garage immediately sets this home apart from the others. Both 2 car garages are connected to the house by a massive covered deck that wraps all the way around the rear of the house. Just inside the home, you'll walk into a large entry with a soaring cathedral ceiling that flows into the great room. The great room is warmed by a fireplace with built-in bookshelves. The kitchen and dining room are open to the great room. The kitchen includes a large walk-in pantry and a large island with a snack bar. Behind the kitchen, the master suite includes a large bathroom with his/her vanities, a soaking tub, an enclosed toilet, and a huge walk-in closet. On the left side of the home, you'll find 2 additional bedrooms. Bedrooms 2 and 3 share access to a Hollywood bathroom. An optional finished basement adds 1806 sq ft of finished space that includes amazing amenities like a table area, an exercise room, a bunk room, an additional family room, and lake storage.