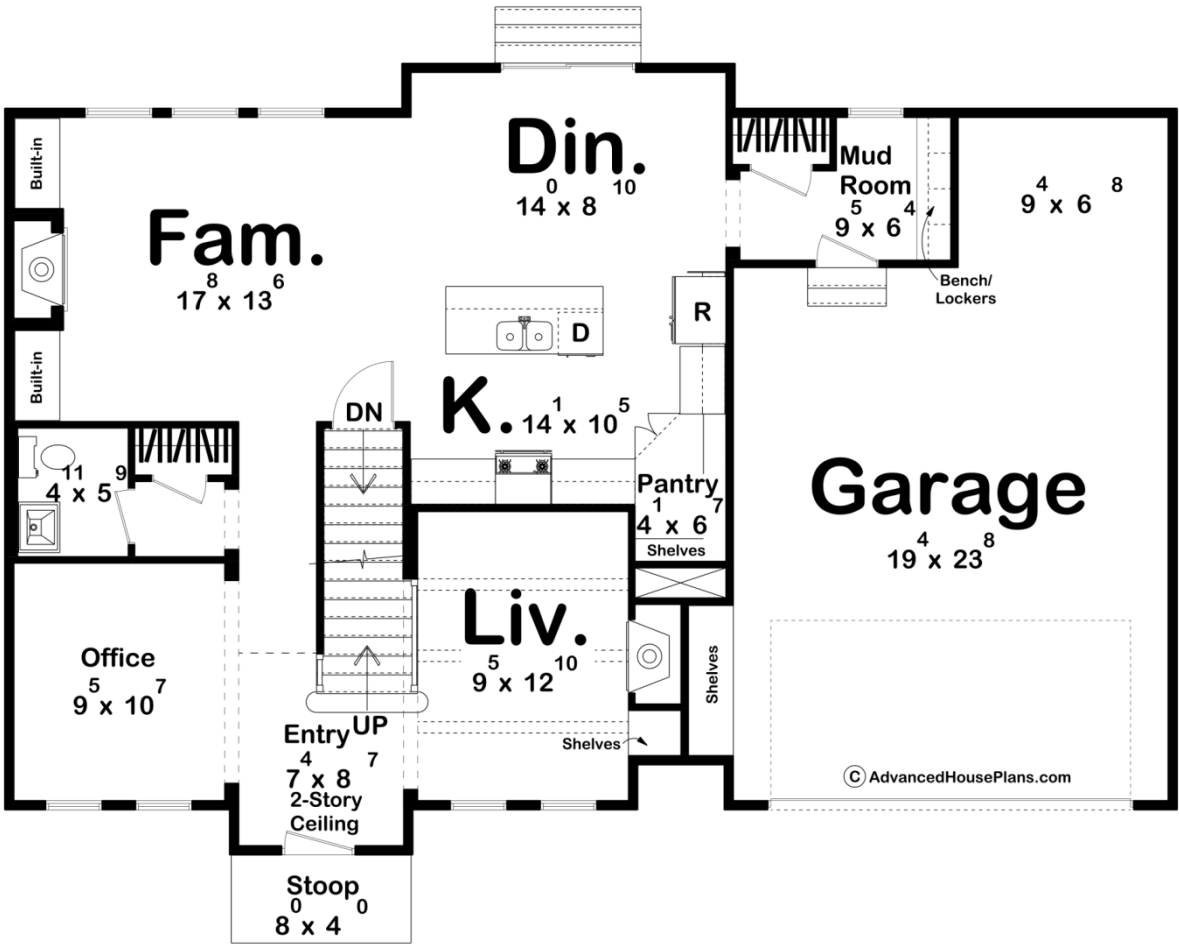
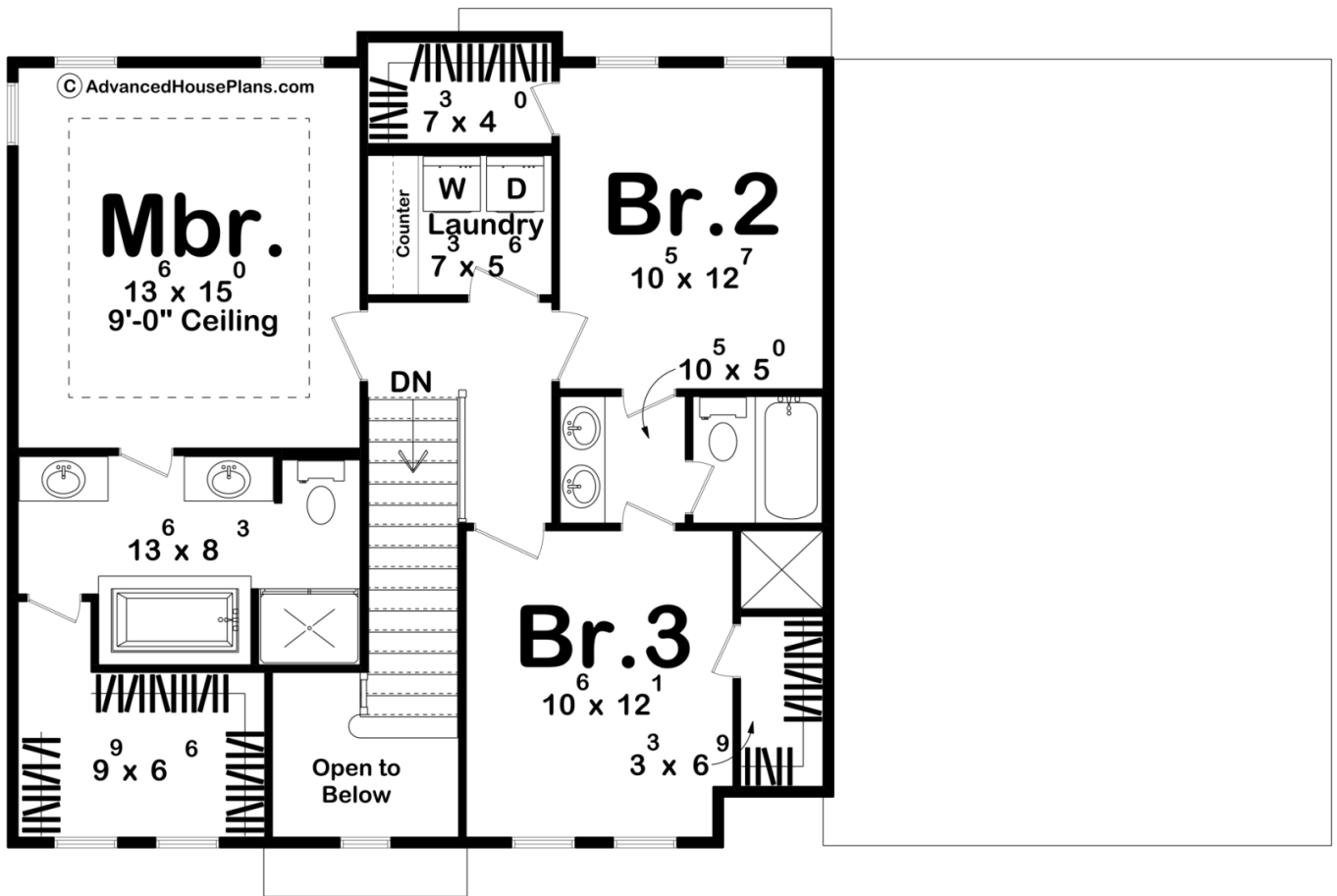




29315 - Duncan Data Sheet

1998 SQ FT	3 BEDS	3 BATHS	2 BAYS	52' 0" WIDE	39' 0" DEEP
---------------	-----------	------------	-----------	----------------	----------------





## Construction Specs

### Layout

Bedrooms	3
Bathrooms	3
Garage Bays	2

### Square Footage

Main Level	1084 Sq. Ft.
Second Level	914 Sq. Ft.
Garage	554 Sq. Ft.
Total Finished Area	1998 Sq. Ft.

### Exterior Dimensions

Width	52' 0"
Depth	39' 0"
Ridge Height	33' 0"
<i>Calculated from main floor line</i>	

**Default Construction Stats**  
*Stats are unique to the individual plan.*

Foundation Type	Basement
Exterior Wall Construction	2x4
Roof Pitches	Primary 8/12, Secondary 10/12
Foundation Wall Height	9'
Main Wall Height	9'
Second Wall Height	8'

**Plan Description**

This charming Colonial-style home combines timeless design with an efficient layout. Step through the gabled front stoop to find a cozy office and formal living room with a fireplace. The open great room, dining area, and kitchen at the rear offer a perfect space for gatherings, with a second fireplace and large windows for natural light. The kitchen boasts an island and walk-in pantry. A mudroom with a bench and coat closet connects to the 2-car garage, offering extra storage or workspace. Upstairs, the master suite features dual vanities, a soaking tub, shower, and walk-in closet, while Bedrooms 2 and 3 share a Jack-and-Jill bath, each with their own walk-in closets. A convenient laundry room with a folding counter completes the upstairs.