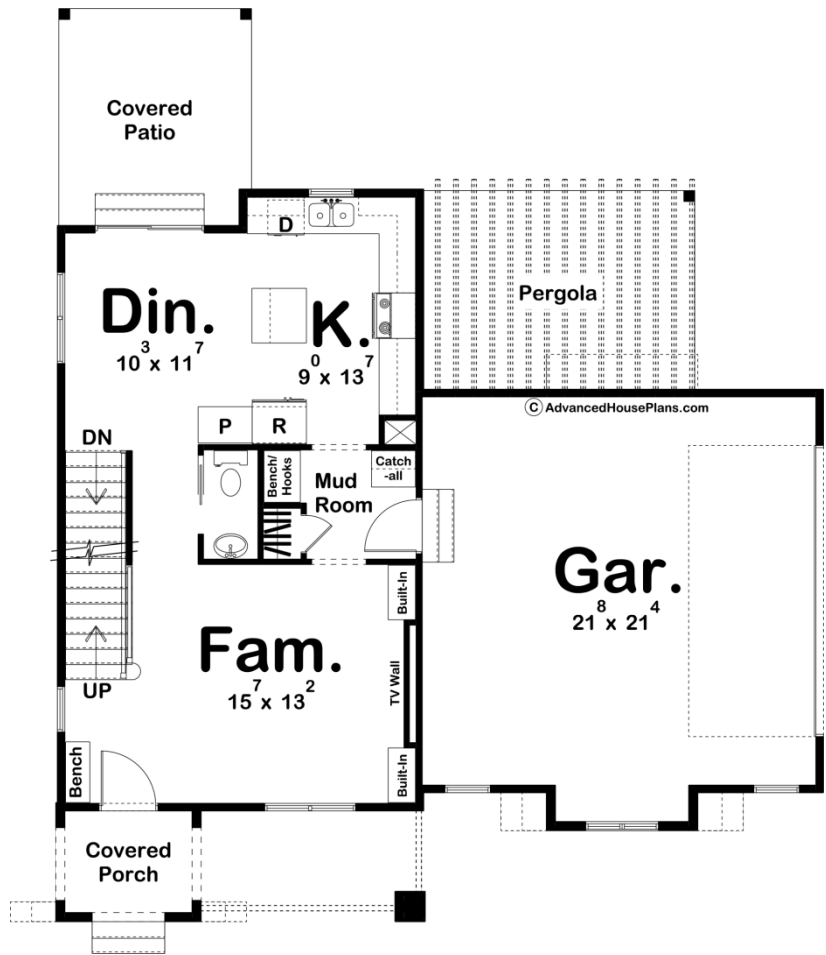
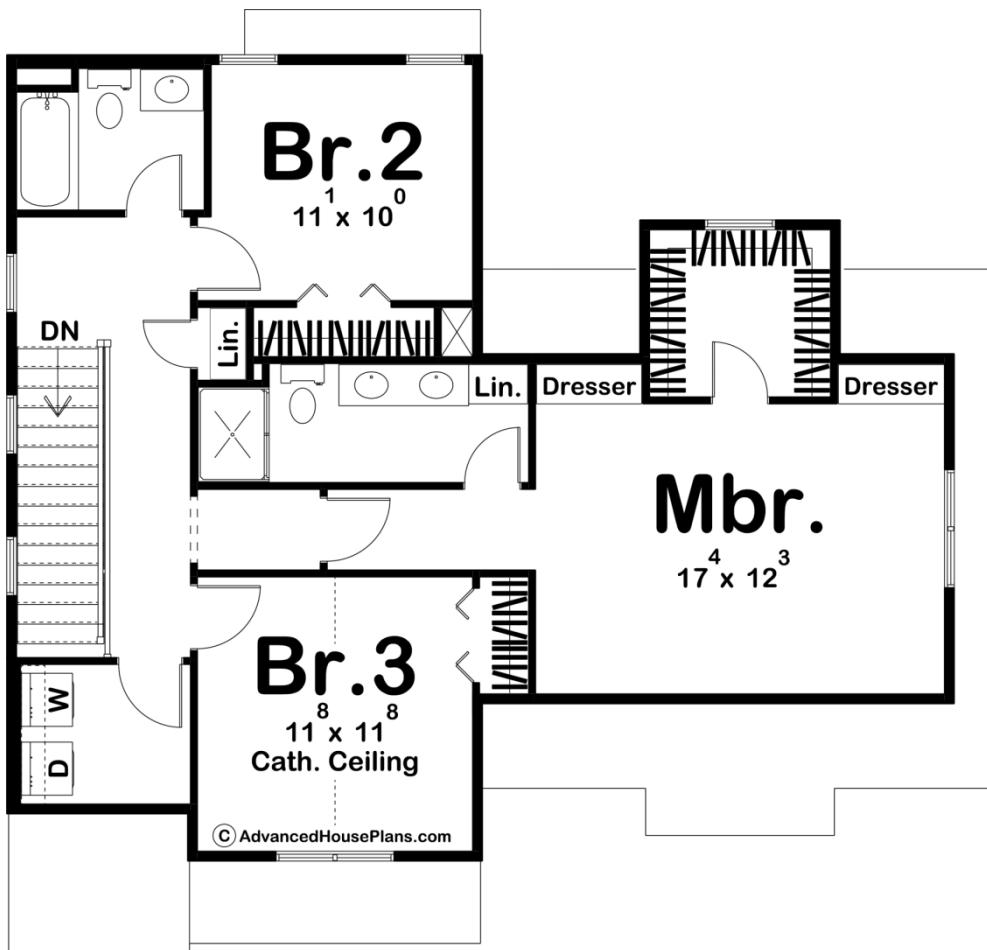




29937 - Foxglove Data Sheet

1614 SQ FT	3 BEDS	3 BATHS	2 BAYS	42' 0" WIDE	50' 0" DEEP
---------------	-----------	------------	-----------	----------------	----------------





Construction Specs

Layout

Bedrooms	3
Bathrooms	3
Garage Bays	2

Square Footage

Main Level	659 Sq. Ft.
Second Level	955 Sq. Ft.
Garage	500 Sq. Ft.
Total Finished Area	1614 Sq. Ft.

Exterior Dimensions

Width	42' 0"
Depth	50' 0"
Ridge Height	27' 0"
<i>Calculated from main floor line</i>	

Default Construction Stats
Stats are unique to the individual plan.

Foundation Type	Basement
Exterior Wall Construction	2x4
Roof Pitches	6/12 Primary, 4/12 Secondary
Foundation Wall Height	9'
Main Wall Height	9'
Second Wall Height	8'

Plan Description

The Foxglove plan is a beautiful modern cottage style house plan. The exterior features white stucco, light stone, and wood accents. Once you enter the house through the front covered porch, you'll find yourself in a large living room with built-in shelves and a tv wall. The kitchen includes an island and a reach-in pantry. Upstairs, you'll find 3 bedrooms including the master suite. The master bedroom includes a walk-in closet, dual built-in dressers, his/her vanities, and a walk-in shower. Back on the main floor, the home's 2 car side load garage accesses the home through a practical mudroom with a catch all.