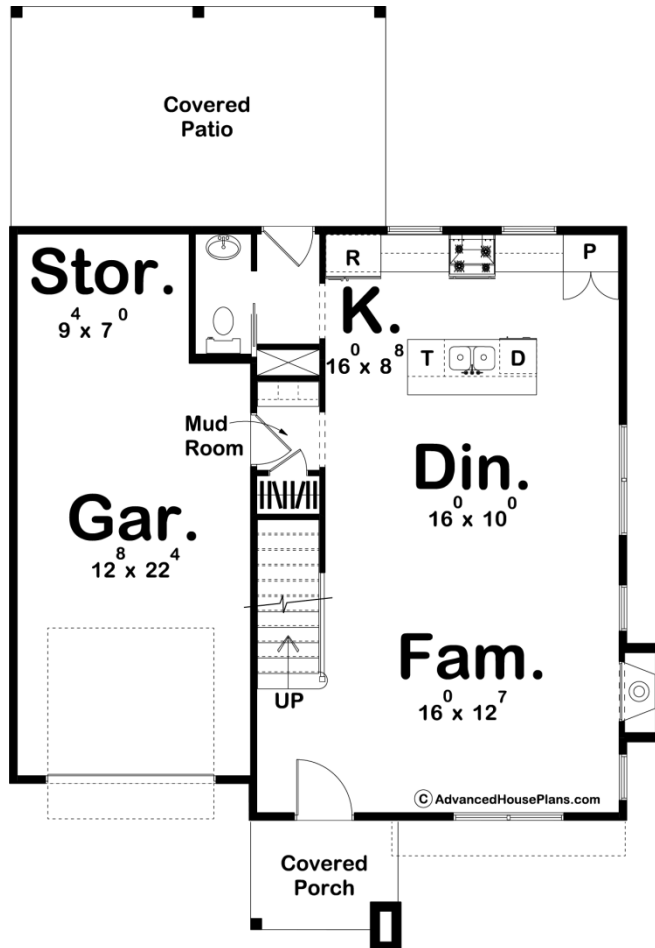
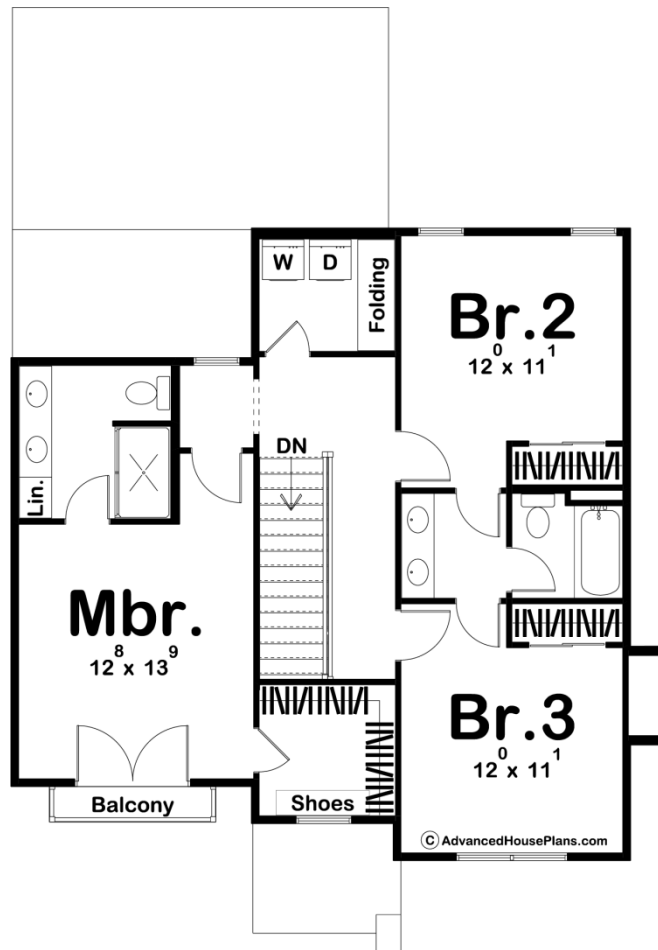




30139 - Lakeview Data Sheet

1500 SQ FT	3 BEDS	3 BATHS	1 BAYS	36' 0" WIDE	51' 0" DEEP
---------------	-----------	------------	-----------	----------------	----------------





Construction Specs

Layout

Bedrooms	3
Bathrooms	3
Garage Bays	1

Square Footage

Main Level	675 Sq. Ft.
Second Level	825 Sq. Ft.
Covered Area	244 Sq. Ft.
Garage	366 Sq. Ft.
Total Finished Area	1500 Sq. Ft.

Exterior Dimensions

Width	36' 0"
Depth	51' 0"
Ridge Height	25' 0"
<i>Calculated from main floor line</i>	

Default Construction Stats

Stats are unique to the individual plan.

Foundation Type	Slab
Exterior Wall Construction	2x4
Main Wall Height	9'
Second Wall Height	8'

Plan Description

The Lakeview plan is an efficient 2 story Modern style house plan. The front of the house shows fantastic curb appeal with its covered porch and cedar siding accents. At only 1500 sq. ft., this plan is an efficient plan that lowers the cost-to-build. Inside the home, the family room, dining room, and kitchen flow seamlessly in an open layout. The family room is warmed by a fireplace and the large front windows allow in plenty of natural light. The kitchen includes a working island with a snack bar and a nice reach-in pantry. A powder bath is conveniently located off the rear of the kitchen. On the second floor, you'll find 3 bedrooms. The master suite includes a bathroom with his/her vanities and a walk-in shower. Bedrooms 2 and 3 share a Jack and Jill bathroom.