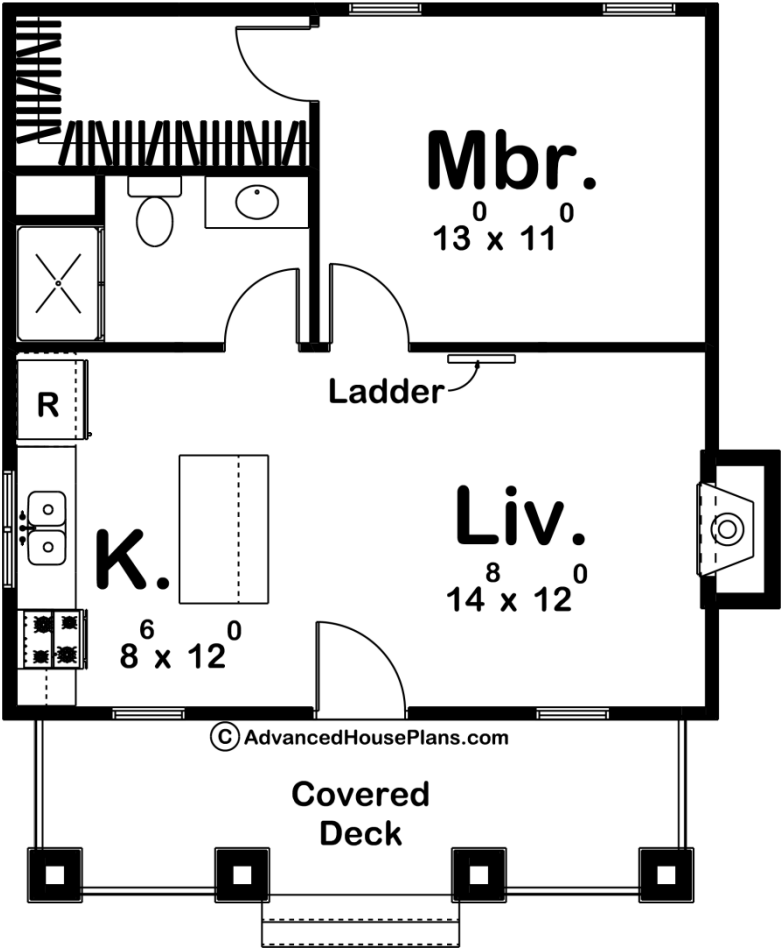
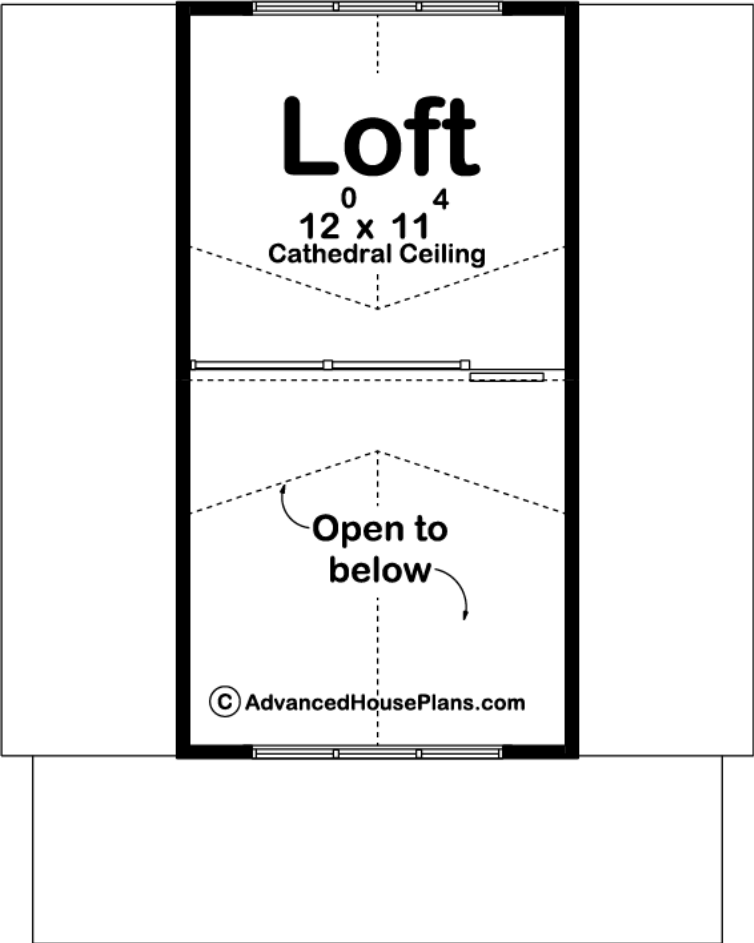




29508 - Madeline Data Sheet

722 SQ FT	1 BEDS	1 BATHS	0 BAYS	24' 0" WIDE	30' 0" DEEP
--------------	-----------	------------	-----------	----------------	----------------





Construction Specs

Layout		
Bedrooms		1
Bathrooms		1
Square Footage		
Main Level		576 Sq. Ft.
Second Level		146 Sq. Ft.
Total Finished Area		722 Sq. Ft.
Exterior Dimensions		
Width		24' 0"
Depth		30' 0"
Ridge Height		21' 0"
<i>Calculated from main floor line</i>		
Default Construction Stats		
<i>Stats are unique to the individual plan.</i>		
Foundation Type		Crawlspace

Exterior Wall Construction	2x4
Roof Pitches	Primary 12/12, Secondary 4/12
Main Wall Height	8'
Second Wall Height	7'

Plan Description

The Madeline, with it's charming craftsman style and great curb appeal, is a great home for a fun getaway. The exterior is enhanced by a covered deck with 4 columns that give this cabin a classic craftsman look. Inside you'll find a large great room that is warmed by a fireplace and a full kitchen complete with an island and breakfast bar. The master bedroom, located on the main floor, has a walk-in closet. In the great room you will find a ladder that leads to a loft that can be used as a second bedroom. The cathedral ceilings make this cabin feel even larger than it is.