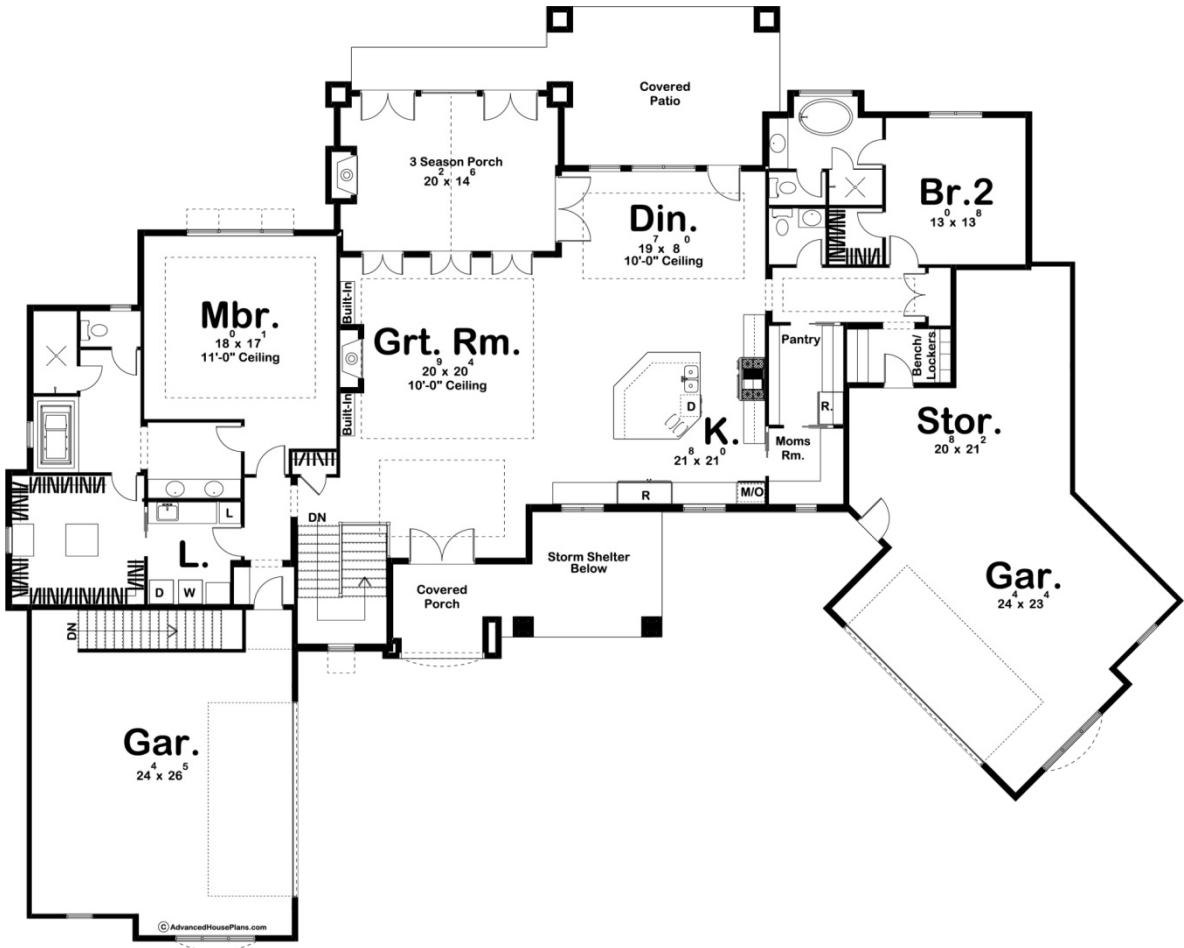




29503 - McGregor Data Sheet

2901 SQ FT	2 BEDS	3 BATHS	4 BAYS	110' 0" WIDE	87' 0" DEEP
---------------	-----------	------------	-----------	-----------------	----------------



Construction Specs

Layout

Bedrooms

Bathrooms	3
Garage Bays	4
Square Footage	
Main Level	2901 Sq. Ft.
Garage	1642 Sq. Ft.
Total Finished Area	2901 Sq. Ft.
Exterior Dimensions	
Width	110' 0"
Depth	87' 0"
Ridge Height	29' 0"
<i>Calculated from main floor line</i>	
Default Construction Stats	
<i>Stats are unique to the individual plan.</i>	
Foundation Type	Basement
Exterior Wall Construction	2x4
Roof Pitches	10/12 Primary, 12/12 Secondary
Foundation Wall Height	9'
Main Wall Height	10'

Plan Description

The great expanses of this French Country, 1 story house plan are highlighted by three separate outdoor living areas -- a covered front porch, a covered patio, and a 3 Seasons porch. Inside, immediate impressions are made by a large great room with a fireplace and a large open kitchen. The kitchen, with a large island with plenty of workspace, is open to the dining area and offers a large walk-in pantry. Away from the living areas, the master suite features an oversized walk-in closet and access to the laundry area. Opposite, bedroom 2 has it's own bathroom and walk-in closet. The dual garages offer great street appeal to this Craftsman house plan.