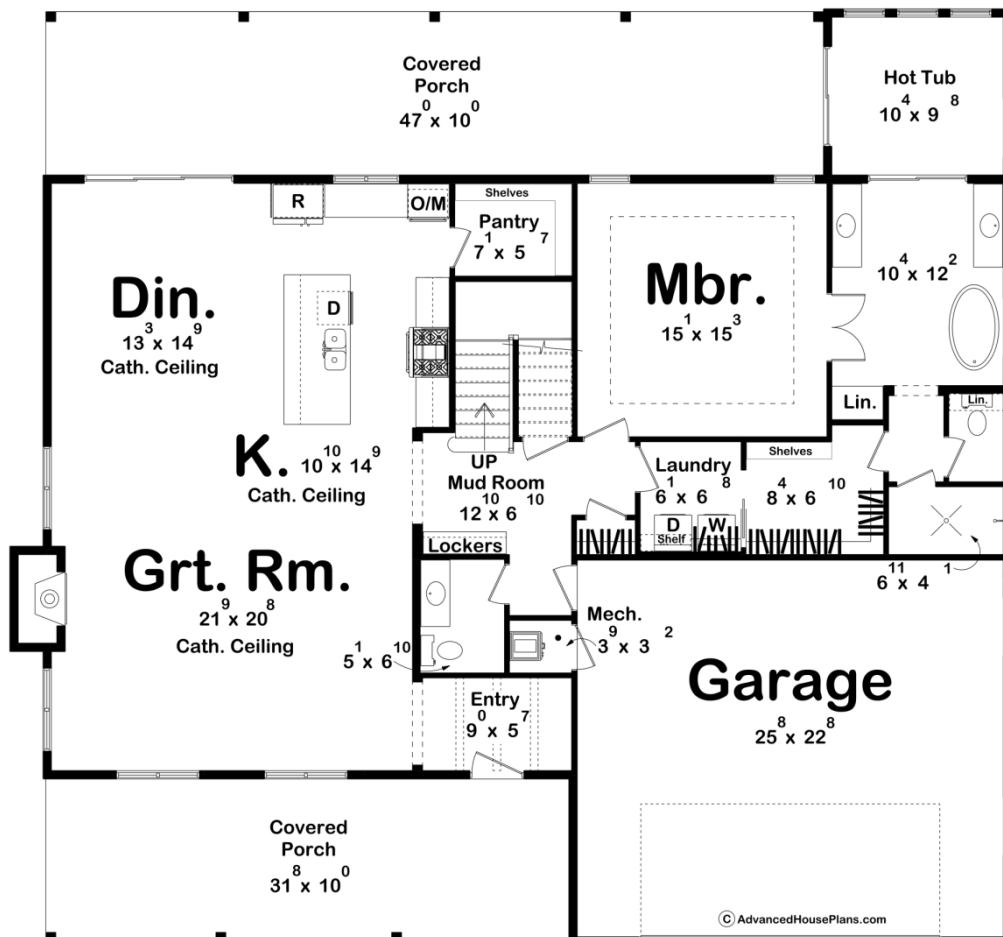
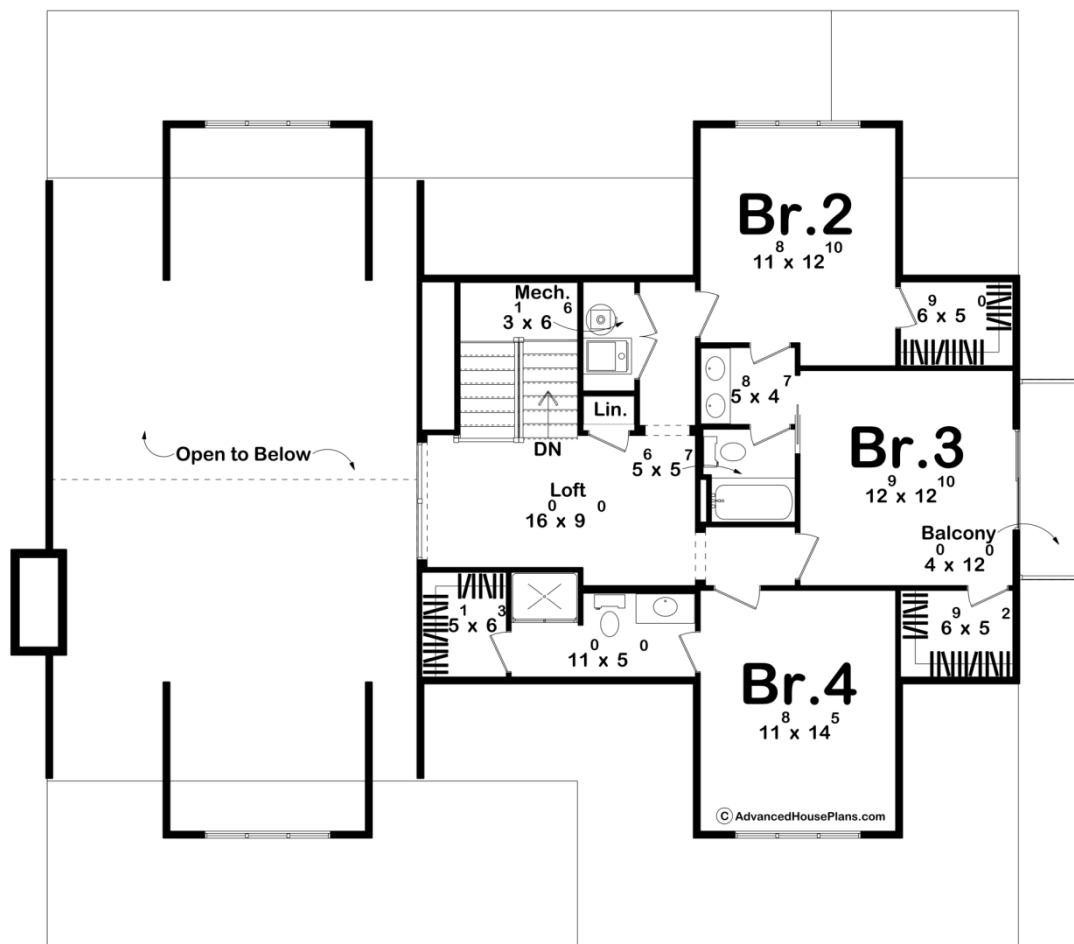




30583 - Moylan Data Sheet

| | | | | | |
|-------|------|-------|------|--------|--------|
| 2852 | 4 | 4 | 2 | 60' 0" | 56' 0" |
| SQ FT | BEDS | BATHS | BAYS | WIDE | DEEP |





Construction Specs

| Layout | | |
|---------------------------------|--|--------------|
| Bedrooms | | 4 |
| Bathrooms | | 4 |
| Garage Bays | | 2 |
| Square Footage | | |
| Main Level | | 1841 Sq. Ft. |
| Second Level | | 1011 Sq. Ft. |
| Covered Area | | 790 Sq. Ft. |
| Garage | | 598 Sq. Ft. |
| Total Finished Area | | 2852 Sq. Ft. |
| Exterior Dimensions | | |
| Width | | 60' 0" |
| Depth | | 56' 0" |
| Ridge Height | | 29' 2" |
| Calculated from main floor line | | |

Default Construction Stats
Stats are unique to the individual plan.

| | |
|----------------------------|-------------------------------------|
| Foundation Type | Slab |
| Exterior Wall Construction | 2x4 |
| Roof Pitches | Primary 10/12, Secondary 8/12, 5/12 |
| Main Wall Height | 9' |
| Second Wall Height | 8' |

Plan Description

Step into the Moylan, a stunning 4-bedroom, 4-bath farmhouse-style home. From its expansive covered porches in the front and rear to its charming balcony, this home invites you to savor the great outdoors. The master suite is a true retreat, with a luxurious bathroom that connects directly to a private hot tub area for ultimate relaxation. The open-concept living area is bathed in natural light, featuring a two-story cathedral ceiling and a cozy fireplace in the great room. The main floor also includes a practical laundry room and a mudroom, keeping your day-to-day life effortlessly organized. The Moylan blends timeless farmhouse charm with thoughtful design, creating a home that's as functional as it is beautiful.