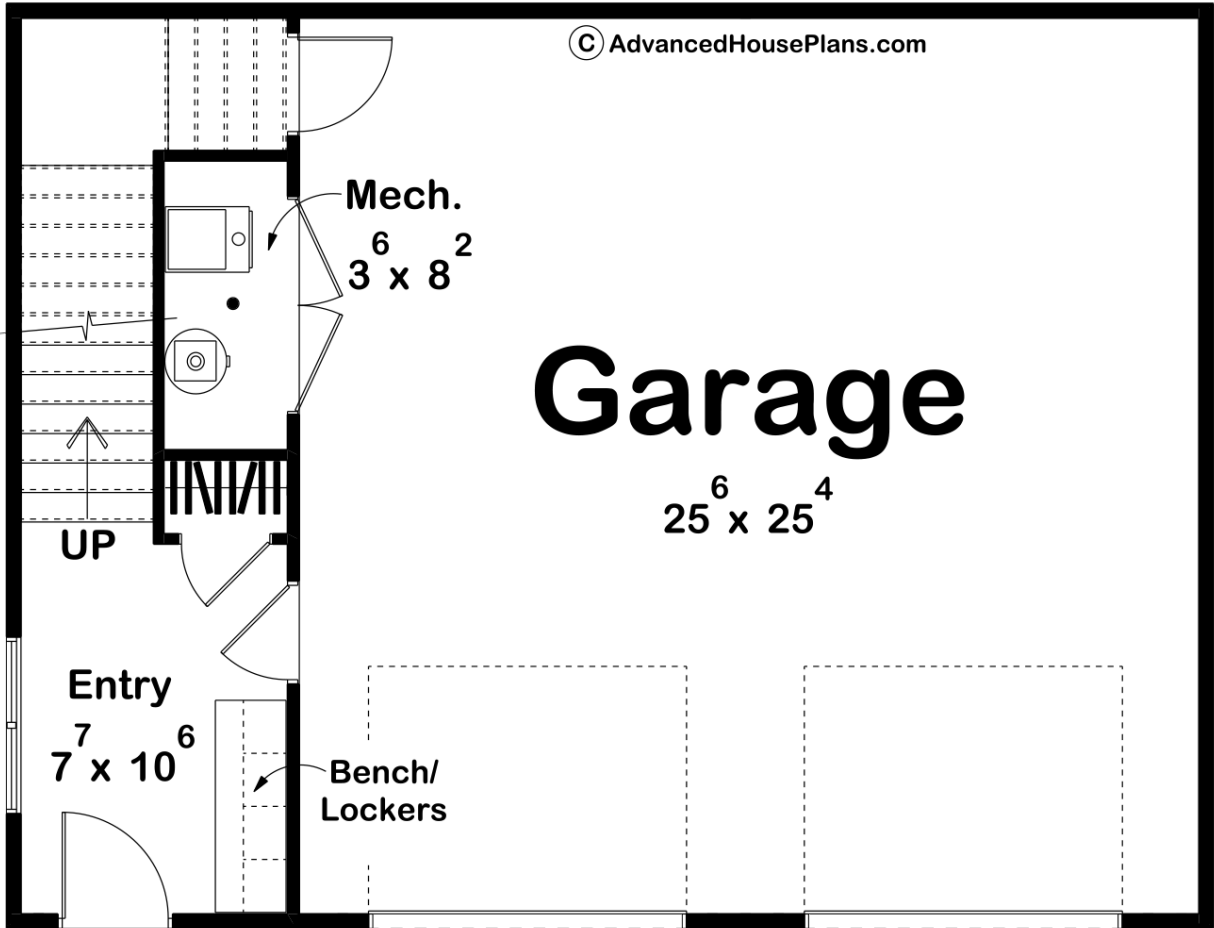
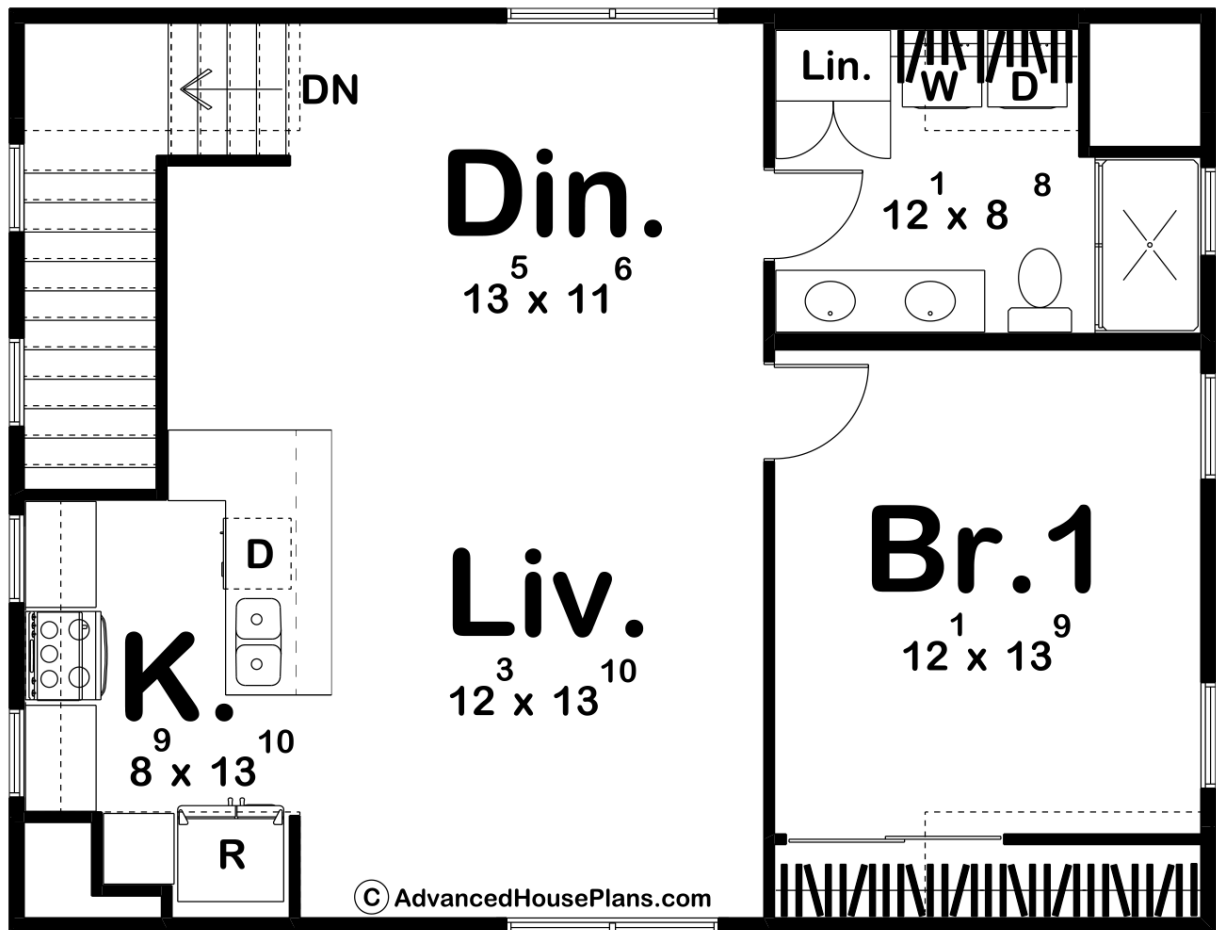




30446 - Pineville Data Sheet

1009 SQ FT	1 BEDS	1 BATHS	2 BAYS	34' 0" WIDE	26' 0" DEEP
---------------	-----------	------------	-----------	----------------	----------------





## Construction Specs

### Layout

Bedrooms	1
Bathrooms	1
Garage Bays	2

### Square Footage

Main Level	185 Sq. Ft.
Second Level	824 Sq. Ft.
Garage	671 Sq. Ft.
Total Finished Area	1009 Sq. Ft.

### Exterior Dimensions

Width	34' 0"
Depth	26' 0"
Ridge Height	25' 0"
<i>Calculated from main floor line</i>	

**Default Construction Stats**  
*Stats are unique to the individual plan.*

Foundation Type	Slab
Exterior Wall Construction	2x4
Roof Pitches	Primary 6/12, Secondary 3/12
Main Wall Height	10'
Second Wall Height	9'

**Plan Description**

The 2-story barndominium style carriage house offers a perfect blend of rustic charm and modern functionality. Situated atop a spacious garage on the main level, the upper floor welcomes you into a cozy living space designed for comfort and convenience. As you approach the structure, the exterior boasts a classic barn aesthetic with its board & batten siding, a shed roof and wood accents. A 2-car garage provides ample space for parking vehicles, storing tools, or indulging in hobbies. Upon entering the home, a spacious mud room accompanies you to the stairway leading up to the heart of the home on the second level. The open-concept layout seamlessly connects the kitchen, living area, dinette, and bedroom, creating a welcoming and versatile space for relaxation and entertaining. Completing the upper level, a combined laundry and bathroom area offers convenience and functionality, featuring modern fixtures and ample storage space for everyday essentials.