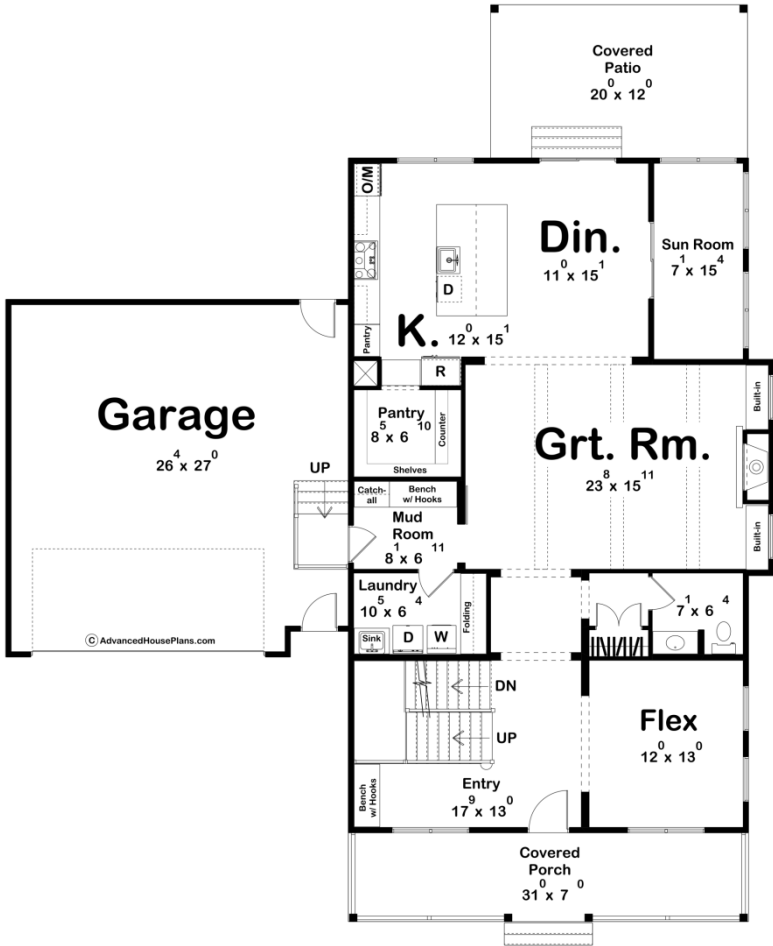
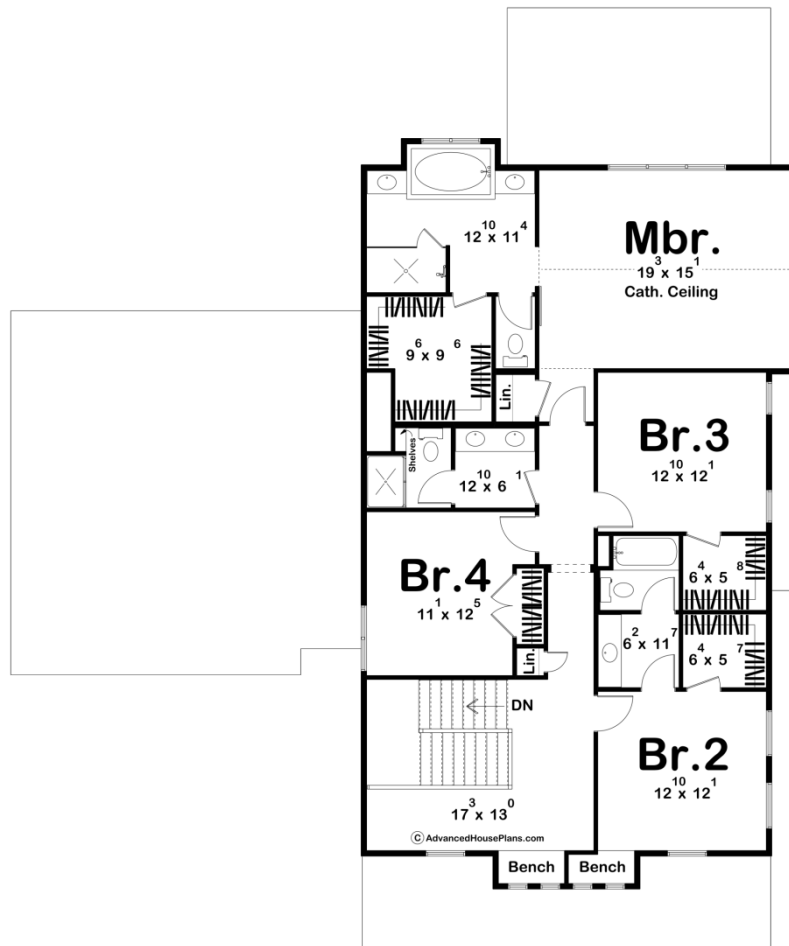




29636 - Silverton Cottage Data Sheet

| | | | | | |
|---------------|-----------|------------|-----------|----------------|----------------|
| 3156 SQ FT | 4 BEDS | 4 BATHS | 2 BAYS | 60' 0" WIDE | 72' 0" DEEP |
|---------------|-----------|------------|-----------|----------------|----------------|





Construction Specs

Layout

| | |
|-------------|---|
| Bedrooms | 4 |
| Bathrooms | 4 |
| Garage Bays | 2 |

Square Footage

| | |
|---------------------|--------------|
| Main Level | 1540 Sq. Ft. |
| Second Level | 1616 Sq. Ft. |
| Garage | 735 Sq. Ft. |
| Total Finished Area | 3156 Sq. Ft. |

Exterior Dimensions

| | |
|--|--------|
| Width | 60' 0" |
| Depth | 72' 0" |
| Ridge Height | 31' 0" |
| <i>Calculated from main floor line</i> | |

Default Construction Stats
Stats are unique to the individual plan.

| | |
|----------------------------|---------------------------------------|
| Foundation Type | Basement |
| Exterior Wall Construction | 2x4 |
| Roof Pitches | 8/12 Primary, 6/12 and 4/12 Secondary |
| Foundation Wall Height | 9' |
| Main Wall Height | 10' |
| Second Wall Height | 8' |

Plan Description

Step into this inviting 2-story Modern Farmhouse, where charm meets functionality. The front porch welcomes you into a spacious entry with a versatile flex room. The great room, warmed by a fireplace, opens to a bright kitchen with a stunning island, perfect for gatherings, and a large walk-in pantry. Imagine unwinding in the sunroom just off the dining area—your new favorite spot to relax. Upstairs, the master suite is your personal retreat, complete with a luxurious walk-in shower and expansive closet. Bedrooms 3 and 4 share a convenient bath, while Bedroom 4 enjoys its own private bath and walk-in closet. This home blends modern farmhouse elegance with everyday practicality. You'll love it!