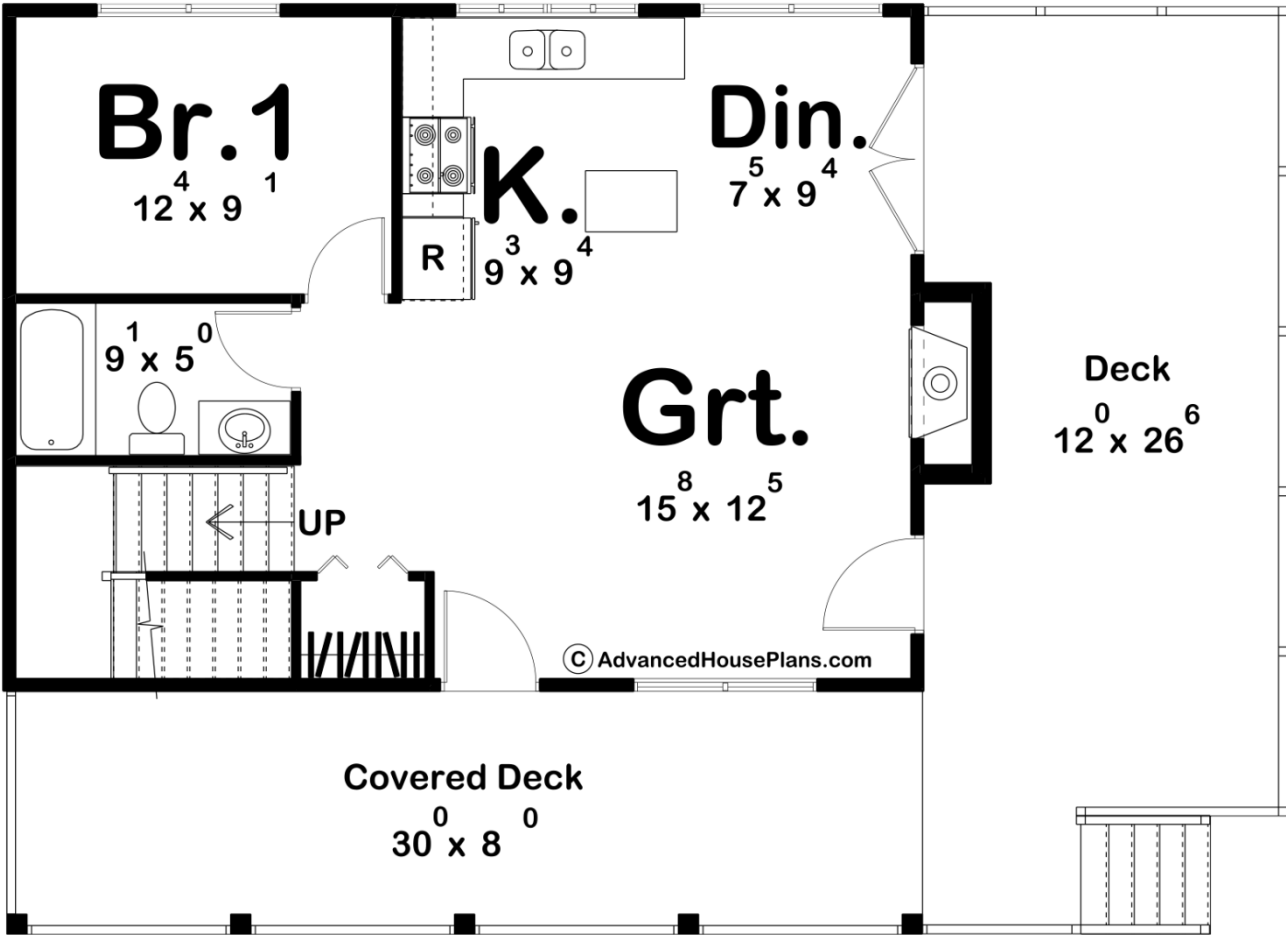
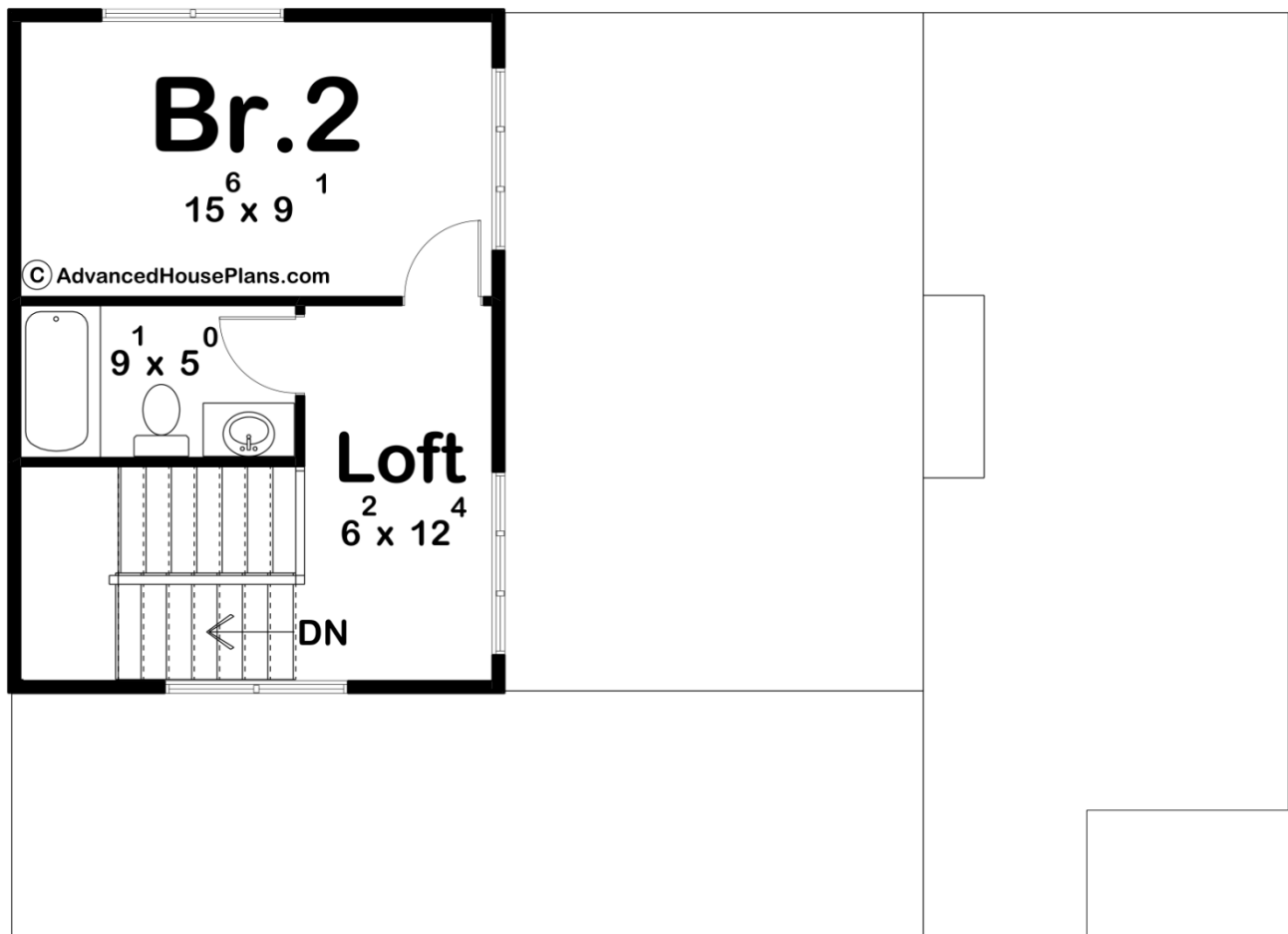




29546 - Sundance Data Sheet

968 SQ FT	2 BEDS	2 BATHS	0 BAYS	43' 0" WIDE	31' 0" DEEP
--------------	-----------	------------	-----------	----------------	----------------





Construction Specs

Layout

Bedrooms	2
Bathrooms	2

Square Footage

Main Level	670 Sq. Ft.
Second Level	298 Sq. Ft.
Total Finished Area	968 Sq. Ft.

Exterior Dimensions

Width	43' 0"
Depth	31' 0"
Ridge Height <i>Calculated from main floor line</i>	26' 0"

Default Construction Stats

Stats are unique to the individual plan.

Foundation Type	Crawlspace
-----------------	------------

Exterior Wall Construction	2x4
Roof Pitches	12/12 Primary, 4/12 Secondary
Main Wall Height	9'
Second Wall Height	8'

Plan Description

Welcome to this charming two-story ADU (Accessory Dwelling Unit) that perfectly blends cabin coziness with cottage charm. Designed to maximize space and comfort, this home features wood accents and classic lap siding, giving it a warm and inviting exterior that fits beautifully into any natural setting. On the main floor, you will find a fully equipped kitchen with modern appliances, ample counter space, and wooden cabinetry that complements the overall rustic aesthetic. Adjacent to the kitchen, a cozy dining area offers a perfect spot for meals. The open-concept great room serves as the central gathering space. The main floor also includes a serene bedroom alongside a full bathroom. Ascending to the second floor, you'll discover a private bedroom that offers a cozy retreat with charming details. Conveniently located next to the bedroom, is the second floor bathroom. A small loft space at the top of stairs provides a versatile area, perfect for a reading nook, home office, or additional lounging spot. This ADU house plan combines functionality and style, creating a perfect balance of comfort and efficiency. Its cabin/cottage feel makes it an ideal addition to any property, providing a welcoming and practical living space.