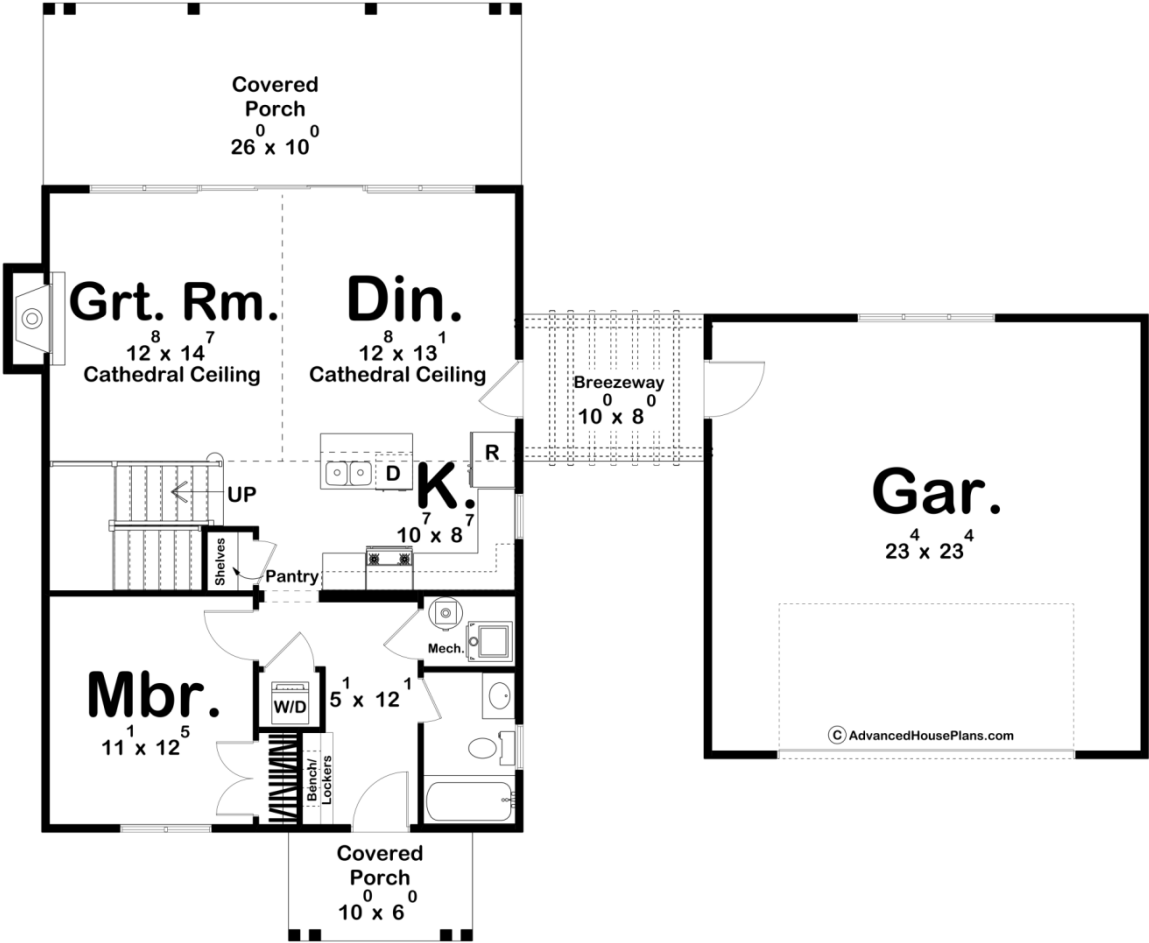
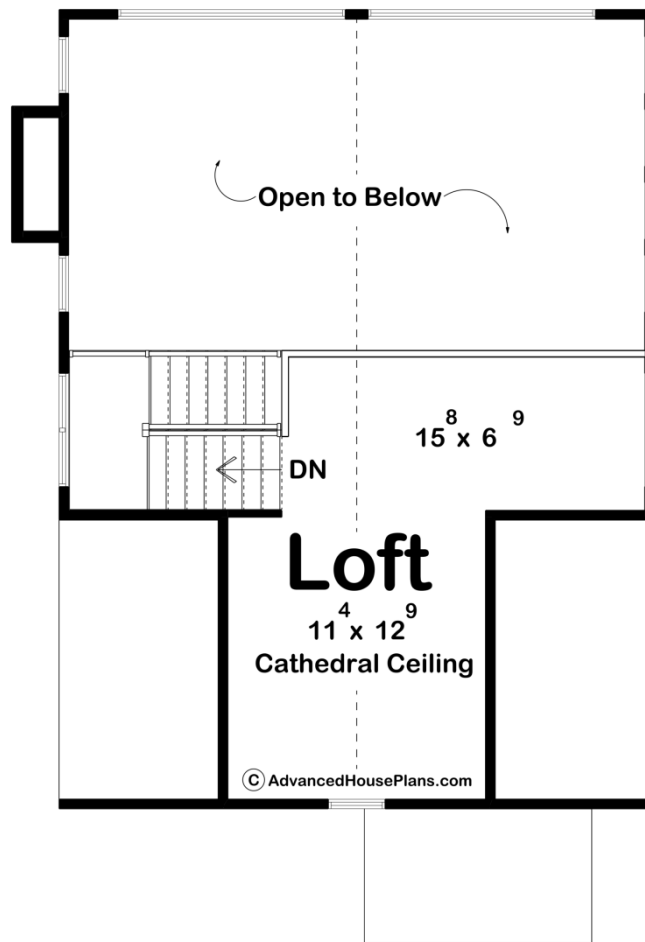




29415 - Thompson Falls Data Sheet

1194 SQ FT	1 BEDS	1 BATHS	2 BAYS	62' 0" WIDE	51' 0" DEEP
---------------	-----------	------------	-----------	----------------	----------------





## Construction Specs

### Layout

Bedrooms	1
Bathrooms	1
Garage Bays	2

### Square Footage

Main Level	921 Sq. Ft.
Second Level	273 Sq. Ft.
Garage	576 Sq. Ft.
Total Finished Area	1194 Sq. Ft.

### Exterior Dimensions

Width	62' 0"
Depth	51' 0"
Ridge Height	23' 0"
<i>Calculated from main floor line</i>	

**Default Construction Stats**  
*Stats are unique to the individual plan.*

Foundation Type	Slab
Exterior Wall Construction	2x4
Roof Pitches	Primary 12/12, Secondary 8/12, 4/12
Main Wall Height	9'
Second Wall Height	8'

**Plan Description**

This 1.5-story, Modern Farmhouse cabin plan is highlighted by a detached 2 car garage with breezeway and a covered rear patio. Inside the entry is a bench and locker, which is where you will kick off the work boots and get into the flipflops. Further inside is a bedroom with a walk-up closet and the main bath. An oversized patio door gives breathtaking views from the great room, dining and kitchen. Also in the kitchen is a walk-up pantry and a breakfast island. Upstairs, is a kids bunk loft with an overlook out to the great room below and beyond into the covered porch with its large trapezoid windows.As always any Advanced House Plans home plan can be customized to fit your needs with our alteration department. Whether you need to add another garage stall, change the front elevation, stretch the home larger or just make the home plan more affordable for your budget we can do that and more for you at Ahp.