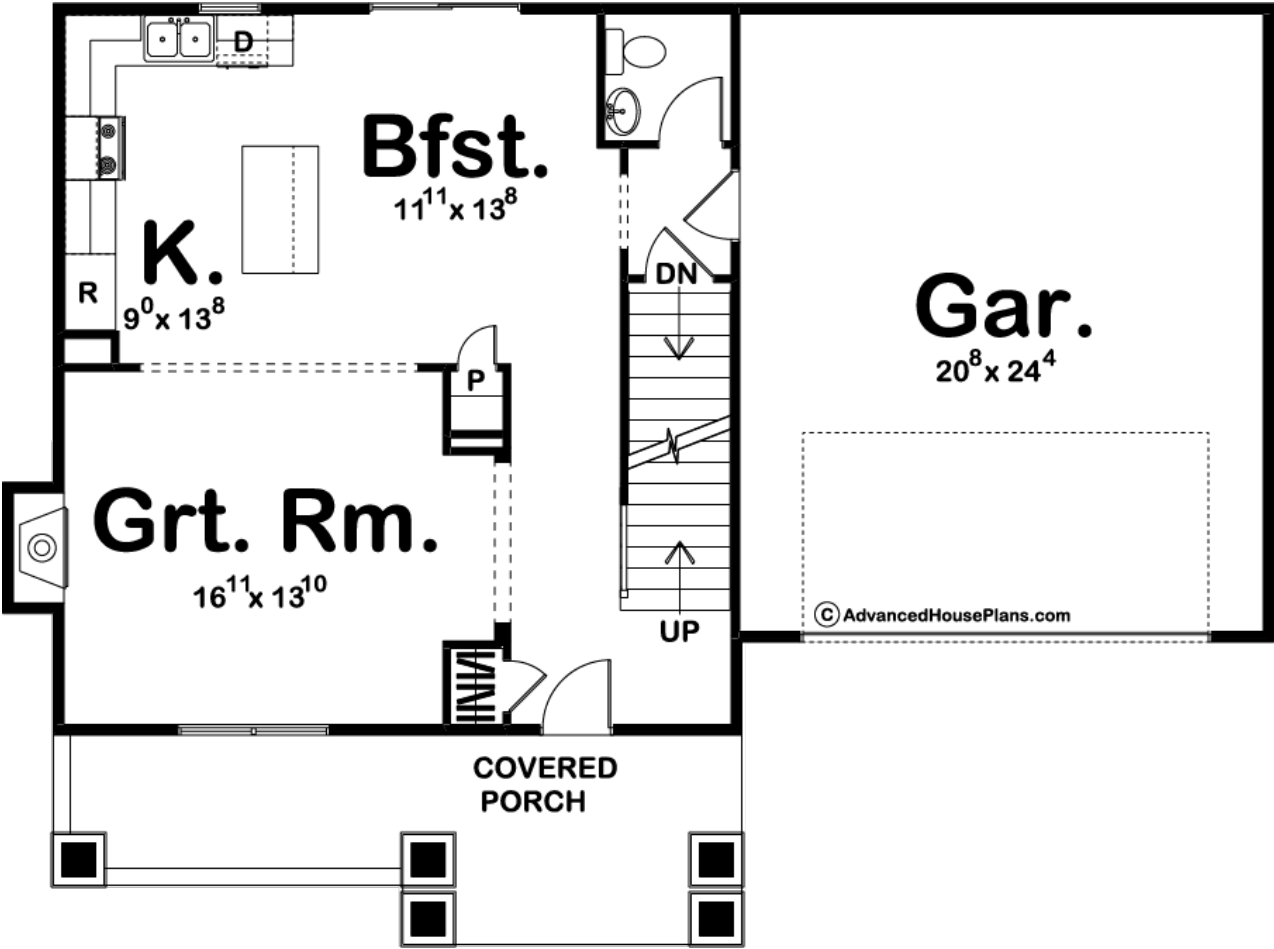
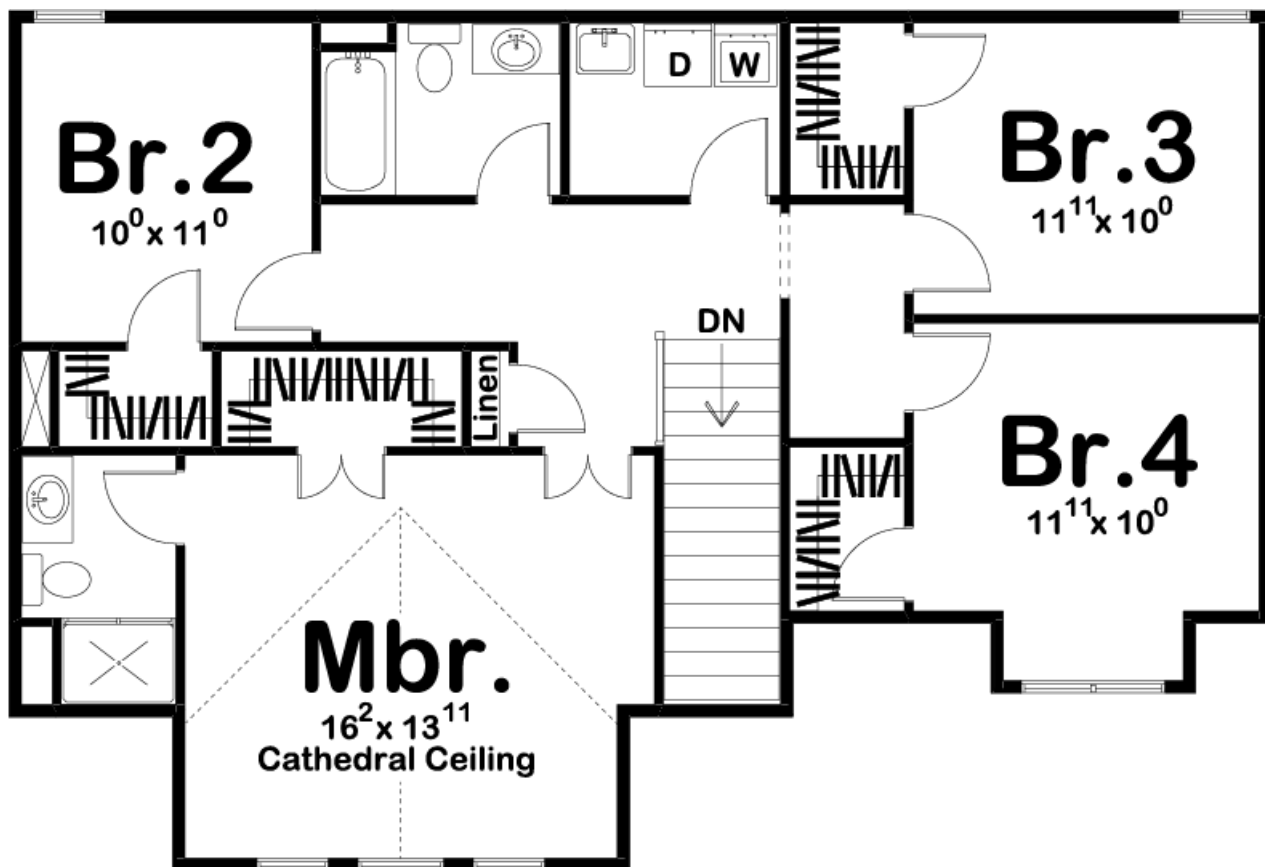




29203 - Titus Data Sheet

1827 SQ FT	4 BEDS	3 BATHS	2 BAYS	50' 0" WIDE	37' 0" DEEP
---------------	-----------	------------	-----------	----------------	----------------





## Construction Specs

### Layout

Bedrooms	4
Bathrooms	3
Garage Bays	2

### Square Footage

Main Level	774 Sq. Ft.
Second Level	1053 Sq. Ft.
Garage	531 Sq. Ft.
Total Finished Area	1827 Sq. Ft.

### Exterior Dimensions

Width	50' 0"
Depth	37' 0"
Ridge Height	31' 0"
<i>Calculated from main floor line</i>	

**Default Construction Stats**  
*Stats are unique to the individual plan.*

Foundation Type	Basement
Exterior Wall Construction	2x4
Roof Pitches	12/12 S-S 10/12 F-B 8/12, 4/12 Secondary
Foundation Wall Height	9'
Main Wall Height	9'
Second Wall Height	8'

**Plan Description**

Stout columns, half-timbered detailing, and soffit brackets enhance the character of this Cottage style house plan. A covered front porch shelters the front entry where guests are invited into the great room with its fireplace and views to the front. The great room flows directly into the breakfast room and island kitchen, imparting a casual atmosphere to the entire living space. Just off the breakfast area, an alcove with powder bath accesses the home's 2-car garage. Upstairs, the master suite lies beneath a tastefully angled ceiling and features a walk-in closet and sunny views to the front. Bedrooms 2, 3 and 4 also have walk-in closets and share a hall bath. The second-level landing accesses a linen closet and laundry room with soaking sink, which conveniently serves all bedrooms. As always any Advanced House Plans home plan can be customized to fit your needs with our alteration department. Whether you need to add another garage stall, change the front elevation, stretch the home larger or just make the home plan more affordable for your budget we can do that and more for you at Ahp.